



950 PEOPLE
our most participants



270 ACTIVITIES
listed



250 ESF SITES
all over France

Present in
6 MOUNTAIN AREAS



6,000 PARTICIPANTS
every year on average



200 EVENTS
every year on average



17,000 INSTRUCTORS
passionate about what they do



BUSINESSES,
**ARE YOU LOOKING FOR
A BREATH OF
FRESH AIR?**

**THEY'VE COME
TO US FOR A BREATH
OF FRESH AIR...**

GROUPS AND SEMINARS

WITH **esf**

- 3M
- AREP
- Bouygues Telecom
- Denis&Co
- European Capital
- IMPS
- Preference Events
- Renault
- SCA
- Vinci
- and others too...



esfbusiness
A 100% SNOW EXPERIENCE WITH **esf**

For more information go to www.esfbusiness.com
+33 (0)4 93 67 43 38. contact@esfbusiness.com

giette by alanciarfab. 09/16. photo credits: Zoom - Andy Parant - Shutterstock - all rights reserved.

esfbusiness
A 100% SNOW EXPERIENCE WITH **esf**

4 GOOD REASONS TO ENJOY A BREATH OF FRESH AIR WITH ESF...

1 KNOWLEDGE

At esf we have the mountains in our blood. We live and breathe them every day. The mountains have shaped the way we think. We feel at home here.

2 DARING

We never tire of what we do and we are never blasé. Every day, we come up with new challenges.

3 EXPERIENCE

The group experience, facing a challenge and enabling friendly competition, that's what esf is about since 1945. We have one mission: to bring the mountains within everyone's reach.

4 SAFETY

Safety lies at the heart of everything we do. We apply stringent safety rules to every activity we organise.



TEAM ELITE

Involving people and motivating groups is a job that suits me down to the ground. With my experience I help the teams understand each other better, both between and within professions. This optimises communication and heads off tension to create more effective teamwork.

Paul-Henri De Le Rue, snowboard Olympic medal-winner



THE CORPORATE SKIOPEN,

This concept was a winner straight away: it appeals to everyone, it's really flexible to manage and it can be scheduled over a whole year. And pushing yourself to the max on the pistes has an impact in your work life too. No doubt about that.

Nicolas, company MD



Christophe, esf instructor since 2004

I love working in corporate events! The approach is very different, because all the participants line up at the start on an equal footing. There's no bluffing. My role is to guide them and ensure this approach works.

TEAM BUILDING

Deconstructing everyone's usual roles builds a new kind of teamwork and reveals hidden talents, with some surprising challenges along the way. And above all, everything's tailor-made to ensure your event is totally unique.

INCENTIVES

We're always coming up with innovative experiences, and we offer an extensive back catalogue of ideas. We bring challenge within everyone's reach. With off-the-peg and tailor made products to choose from.

SNOW EVENTS

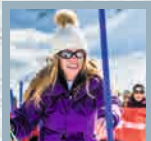
With 250 schools, we offer 250 different mountain playgrounds where anything goes. And because we work with the other in-resort players, even the most original idea can become a reality.

THE CORPORATE SKIOPEN

With the Corporate Skiopen, the challenge is ongoing for everyone. Each individual enters the arena and pits themselves against their colleagues (or themselves) whenever and wherever they want. This unique concept comes into its own when the announcement of the results becomes an internal event.

EVENING EVENTS

A host of ways to break from the everyday: a trapper evening, a night in a yurt, a gala event in a tepee or giant dome, a sledging contest, a night in an igloo, a drinks party in the snow, a torchlight descent and more...



Céline, sales assistant

I would never have imagined I could have an experience like that with work colleagues. It gave us a new insight into each other. The challenges brought us closer together. We now see each other in a different light.