

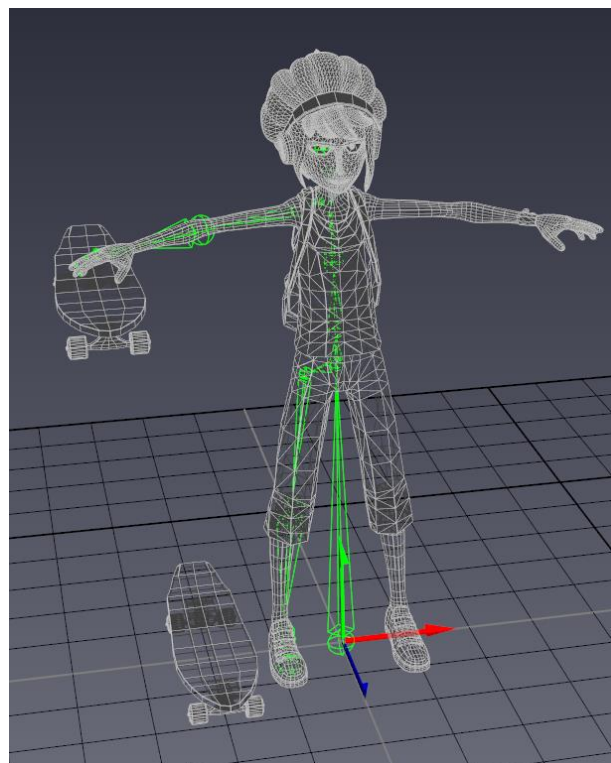
HOW TO USE AKEYTSU WITH UNITY:

CREATE A CHARACTER TO USE IN UNITY:

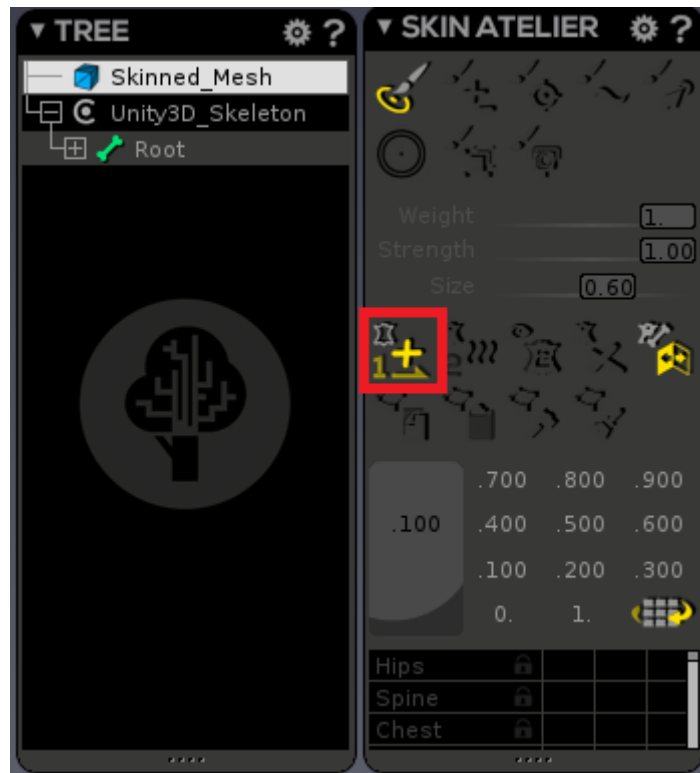
1 – Import a mesh in Akeytsu and click on the “Create Unity3D Skeleton” button on the *SKELETON* window.



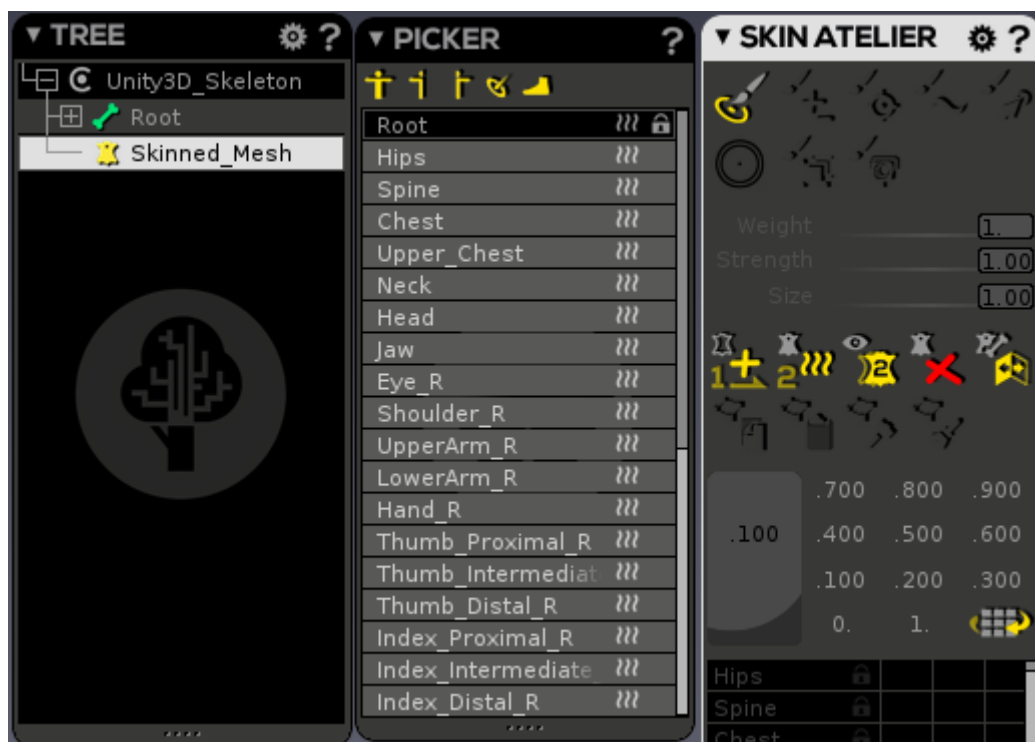
2 – Place all the joints in the correct positions on your mesh. You can delete unwanted joints such as eyes, fingers or toes. Retargeting will also work.



3 – 3. Then, skin the right half of your character by selecting all the joints (without the root one) and the mesh, and click on the “Bind Start Skin” button in the *SKIN ATELIER* window.



4 - Finish the skinning by pressing the “Process End Skin” button in the *SKIN ATELIER* window.



5 – Check and correct the bind skin. When it’s ready, select all joints and click on the Mirror Skin button in the SKINNING Tab.

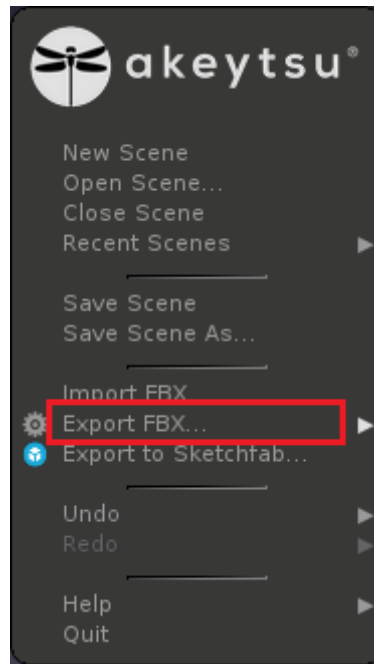


6 – Now you can create an animation, if you wish, and export it to Unity.

With this process, you will be able to retarget your animations in other models or copy animation from them easily in Unity.

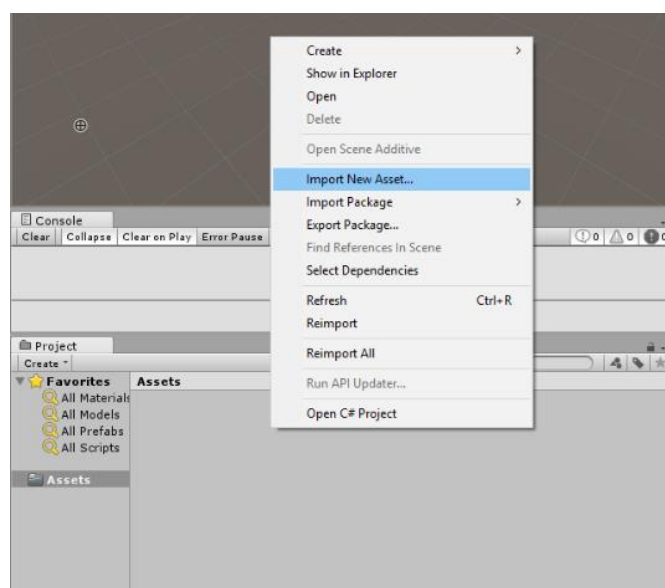
IMPORT A FILE INTO UNITY FROM AKEYTSU:

1 – Export your character in FBX format from Akeytsu by clicking on the “Export...” button on the main menu or pressing CTRL + E.



Give the file a name and choose a location to save on your hard drive.

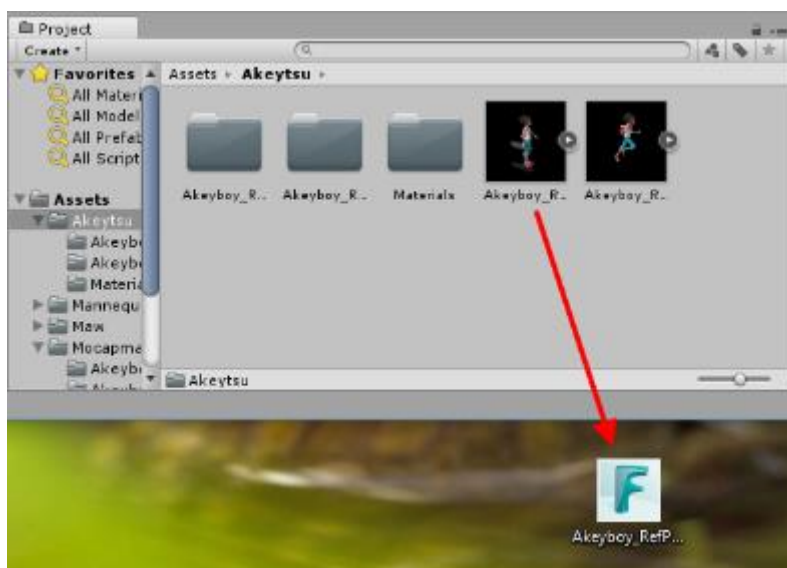
2 – In Unity right-click on Asset Tab, then select “Import New Asset...” .



Your Akeytsu file is now imported into Unity.

IMPORT A FILE INTO AKEYTSU FROM UNITY:

1 – Drag and drop a character file from a Unity window to your desktop:

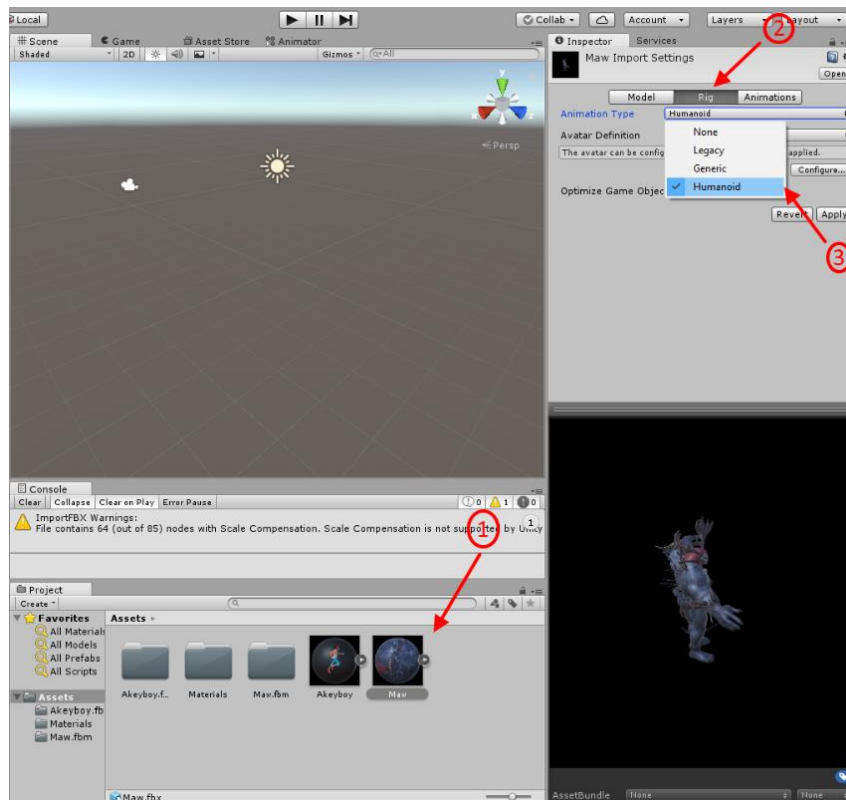


2 – Open Akeytsu and open the new FBX file from the desktop location by choosing “Import...” on the main menu.

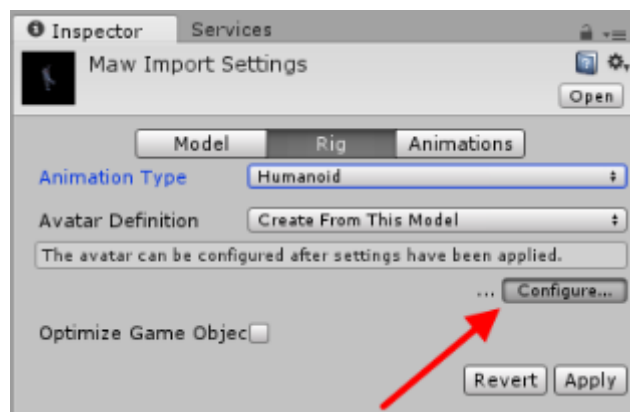
RETARGET AN ANIMATION ON OR FROM ANOTHER CHARACTER:

1 - Import your two characters into your Unity project.

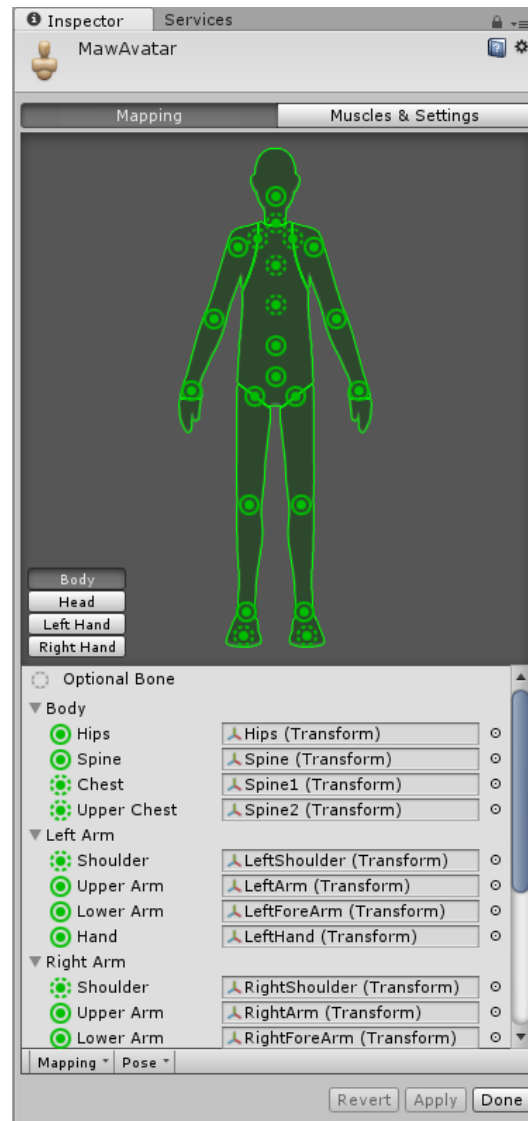
2 - Retarget the two characters skeletons with the humanoid rig of Unity. To do this, click on your character (1) to access to the *Inspector* Tab. Then go to the Rig option (2) and select *Humanoid* (3).



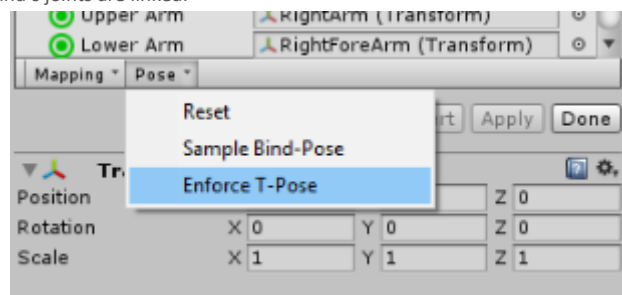
Click on “Configure...” in the *Inspector* tab.



In the new window, you must check if all the joints are correctly linked. Then click on the *Done* button.

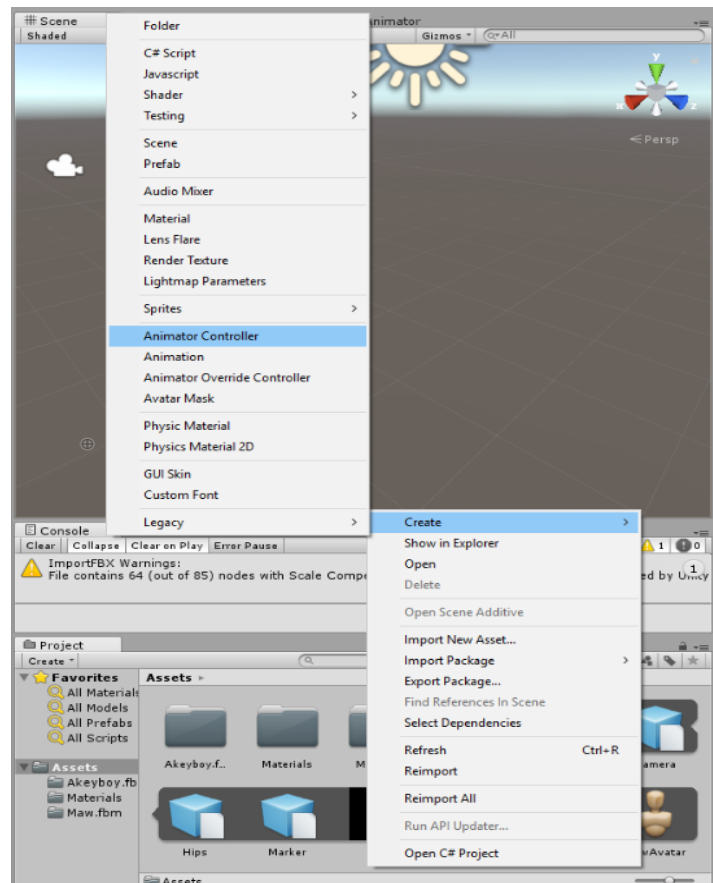


⚠ Don't forget to check how head's and hand's joints are linked.

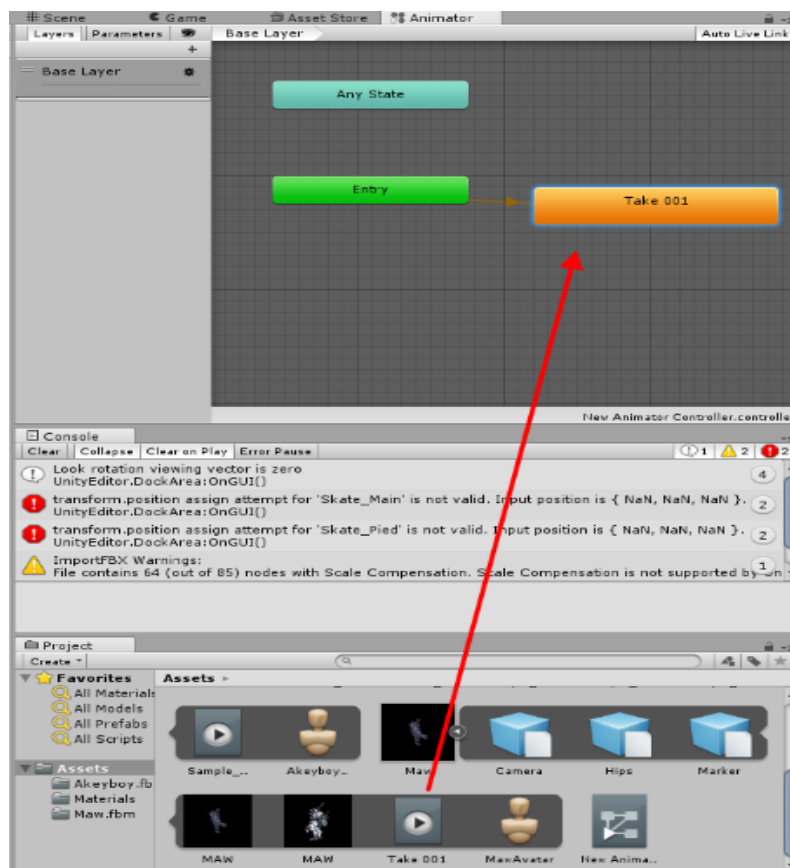


You must complete this step for both characters you want to retarget.

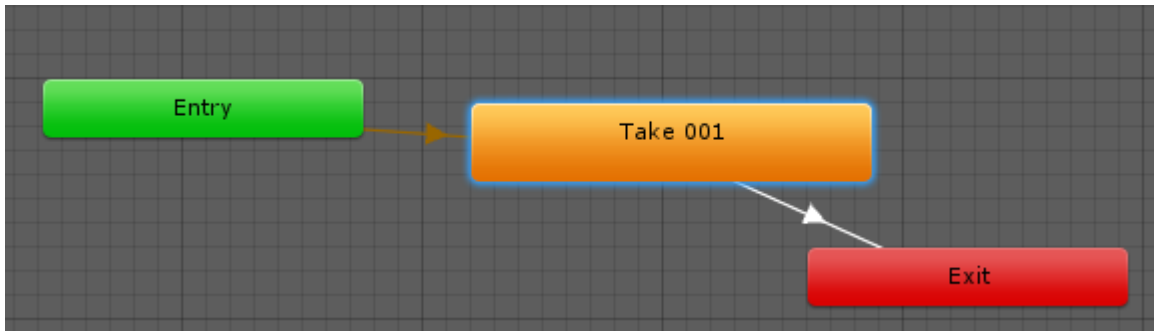
3 – Create an *Action Controller*. To do this right-click on the Asset tab, then select *Create -> Animator Controller*.



When the new window appears, drag the animation you want to use into the scene.

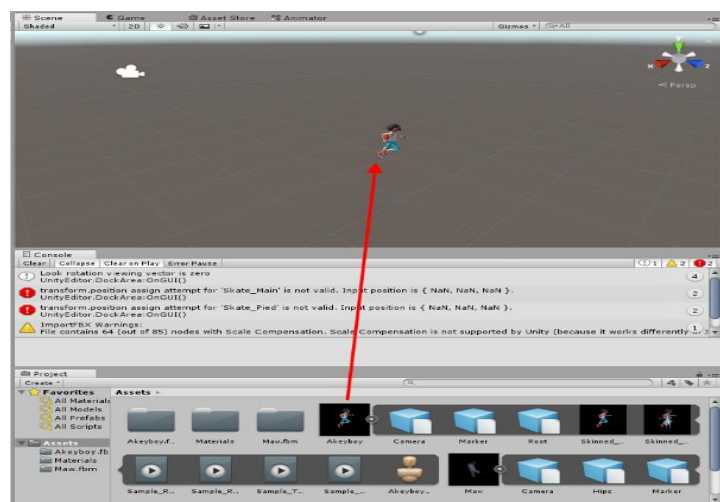


⚠ If you want to loop the animation, create a new transition by right clicking on your animation, then select *Make Transition* and put this new transition between your animation and the exit area:

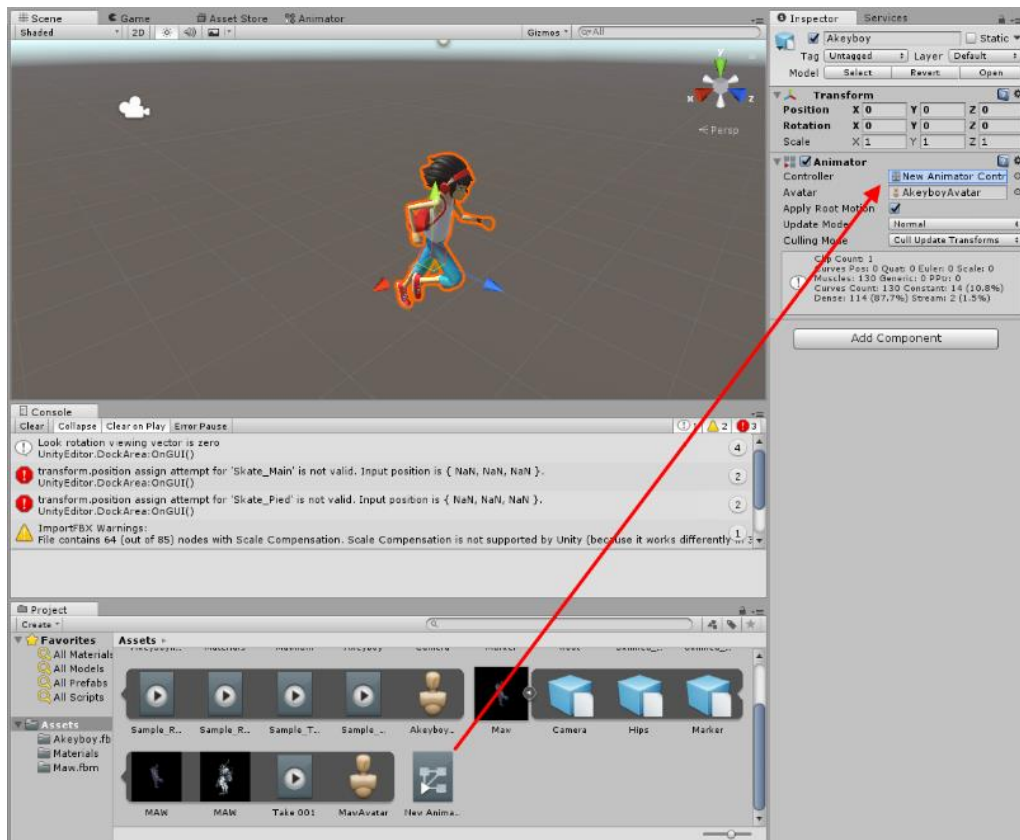


3 – Add your action controller to your character.

In the Asset tab, drag your character into the scene:



Click on your character in the scene to access the *Inspector* tab. Now, drag your action controller to Controller area.



Your animation will now play.

⚠ You can't export an animation which has been retargeted in Unity.